

Your Providenciales Forecast - Thursday, March 11, 2010

Exclusively For:



Prepared By:



A ridge associated with high pressure near Bermuda extends across the Turks/Caicos vicinity and will remain in place through the morning of the 12th.

By the morning of the 12th, a series of low pressure systems will consolidate into a single gale by the evening of the 13th. A frontal boundary associated with the noted developing gale will advance toward the Turks/Caicos vicinity by early on the 14th. The frontal boundary will then meander between Hispaniola and the Turks/Caicos into the

Sunrise: **06:07 AM**
Sunset: **06:00 PM**

High Tide: **04:26 PM**
Low Tide: **11:01 AM**

Today



81F
27C

Abundant Sun
Wind: ENE-ESE 17-23kts
Sea: 2ft
Swell: ENE-NNE 4-6ft

Tonight



69F
21C

Partly Cloudy
Wind: E-SE 17-23kts
Sea: 2ft
Swell: ENE-ESE 5-7ft

Tomorrow



83F
28C

Lots of Sun
Wind: E-SE 17-22kts
Sea: 2ft
Swell: ENE-ESE 5-7ft

Tomorrow Night



71F
22C

Partly Cloudy
Wind: ESE-SSE 18-23kts
Sea: 2ft
Swell: ENE-ESE 5-7ft

Extended Forecast

Saturday



83F
28C
71F
22C

Wind: S-SE/SW 15-22kts
Sea: 2ft
Swell: ENE-ESE 5-7ft

Sunday



81F
27C
73F
23C

Wind: W-SW/NW 15-20kts
Sea: 1ft
Swell: E-SE 5-7ft

Monday



80F
27C
74F
23C

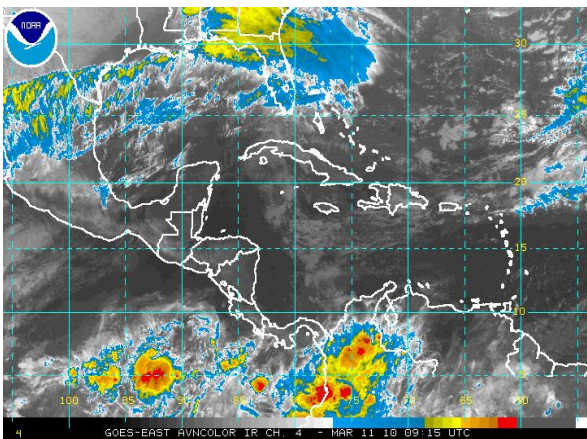
Wind: W-NW/N 15-20kts
Sea: 1ft
Swell: E-SE/NW 4-6ft

Tuesday



81F
27C
73F
23C

Wind: N-NW 13-18kts
Sea: 1ft
Swell: N-NW/NE 4-6ft



Tel: 518-798-1110

Fax: 518-798-4939

Email: wri@wriwx.com

Detailed Weather Forecasts, Briefings and Consultations for Marine Interests since 1961