

Your Providenciales Forecast - Friday, July 30, 2010

Exclusively For:



Prepared By:



High pressure is over the central Atlantic with relatively weak pressure gradients extending sw'ward over the Turks and Caicos through the weekend. Ridge will tend to strengthen slightly early next week. A strong tropical wave is expected to approach the area by the end of next week. We will monitor this over the next several days for tropical development.

Sunrise: **06:25 AM**
Sunset: **07:33 PM**

High Tide: **11:53 AM**
Low Tide: **05:56 PM**

Today



87F
31C

Mostly Sunny
Wind: ESE-ENE 12-18kts
Sea: nil
Swell: ENE-ESE 2-4ft

Tonight



78F
26C

Mostly Clear
Wind: E-SE 11-17kts
Sea: nil
Swell: ENE-ESE 2-4ft

Tomorrow



88F
31C

Mostly Sunny
Wind: ENE-ESE 13-19kts
Sea: nil
Swell: ENE-ESE 2-4ft

Tomorrow Night



78F
26C

Mostly Clear
Wind: E-SE 12-18kts
Sea: nil
Swell: ENE-ESE 3-5ft

Extended Forecast

Sunday



88F
31C
78F
26C

Wind: ENE-ESE 14-20kts
Sea: 1ft
Swell: ENE-ESE 3-5ft

Monday



89F
32C
78F
26C

Wind: E-NE 16-22kts
Sea: 1-2ft
Swell: ENE-ESE 4-6ft

Tuesday



88F
31C
79F
26C

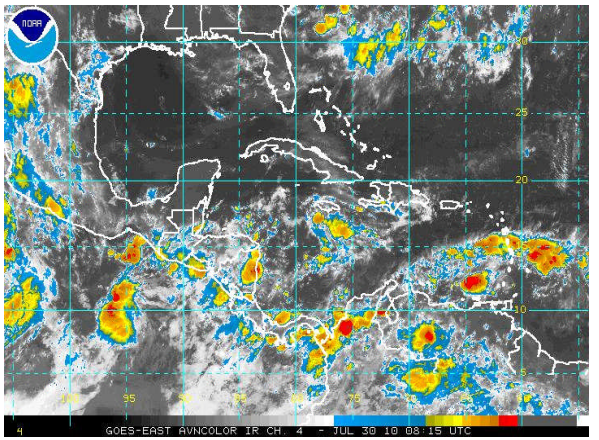
Wind: ENE-ESE 17-23kts
Sea: 1-2ft
Swell: ENE-ESE 4-6ft

Wednesday



88F
31C
81F
27C

Wind: ENE-ESE 16-22kts
Sea: 1-2ft
Swell: ENE-ESE 4-6ft



Tel: 518-798-1110

Fax: 518-798-4939

Email: wri@wriwx.com

Detailed Weather Forecasts, Briefings and Consultations for Marine Interests since 1961